

Local Market Update – August 2012

A RESEARCH TOOL PROVIDED BY THE UTAH ASSOCIATION OF REALTORS®



Utah Association
of REALTORS®

Summit County

- 14.2%

Change in
New Listings

+ 6.3%

Change in
Closed Sales

+ 4.2%

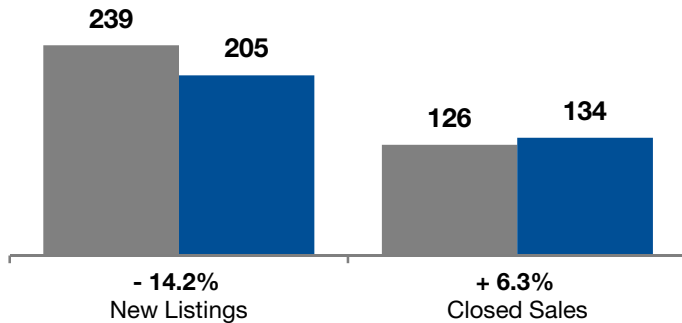
Change in
Median Sales Price

	August			Year to Date		
	2011	2012	+ / -	2011	2012	+ / -
New Listings	239	205	- 14.2%	2,006	1,827	- 8.9%
Pending Sales	118	131	+ 11.0%	931	1,034	+ 11.1%
Closed Sales	126	134	+ 6.3%	888	926	+ 4.3%
Median Sales Price*	\$456,000	\$475,000	+ 4.2%	\$465,000	\$460,000	- 1.1%
Average Sales Price*	\$750,315	\$689,183	- 8.1%	\$773,552	\$747,611	- 3.4%
Percent of Original List Price Received*	86.3%	90.3%	+ 4.6%	86.4%	89.6%	+ 3.7%
Days on Market Until Sale	123	110	- 10.7%	135	136	+ 0.3%
Inventory of Homes for Sale	1,804	1,504	- 16.6%	--	--	--
Months Supply of Inventory	16.9	12.9	- 24.1%	--	--	--

* Does not account for seller concessions. | Activity for one month can sometimes look extreme due to small sample size.

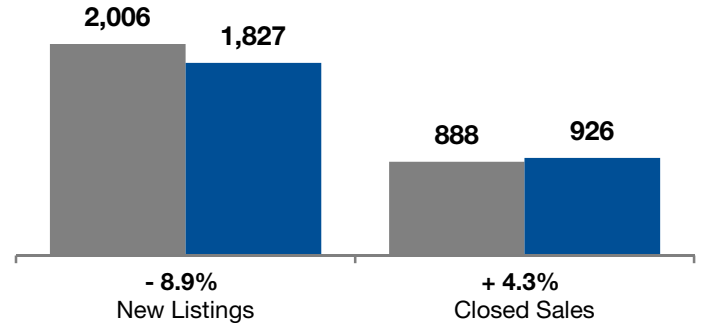
August

■ 2011 ■ 2012

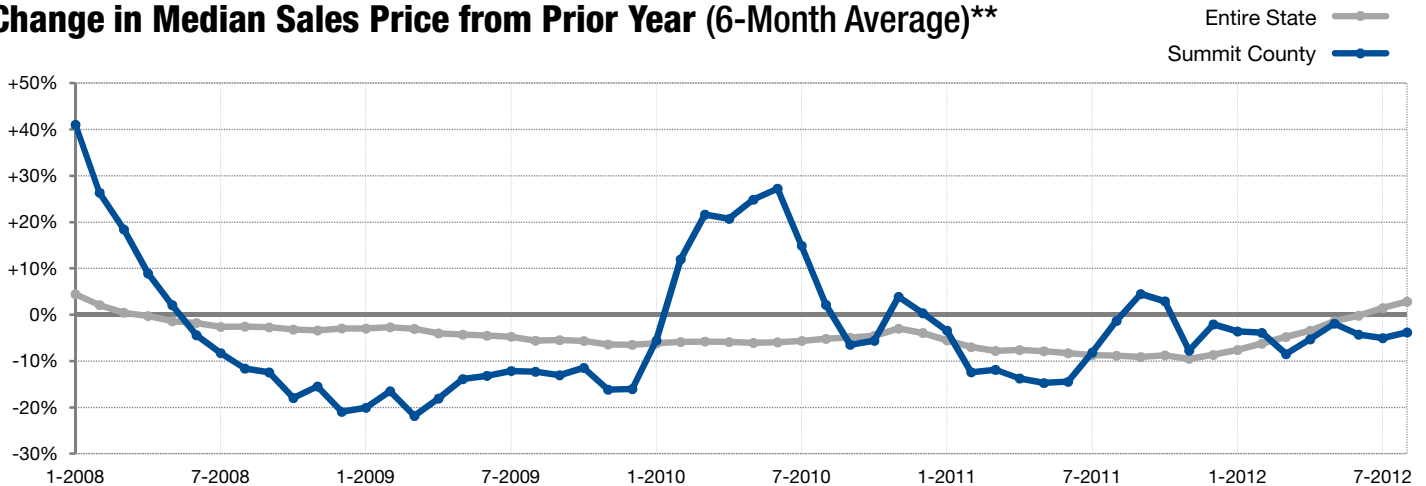


Year to Date

■ 2011 ■ 2012



Change in Median Sales Price from Prior Year (6-Month Average)**



** Each dot represents the change in median sales price from the prior year using a 6-month weighted average. This means that each of the 6 months used in a dot are proportioned according to their share of sales during that period. | All data from the Multiple Listing Services of Utah.

This report includes data from the Park City and Wasatch Front Regional Multiple Listing Services. | Powered by 10K Research and Marketing.